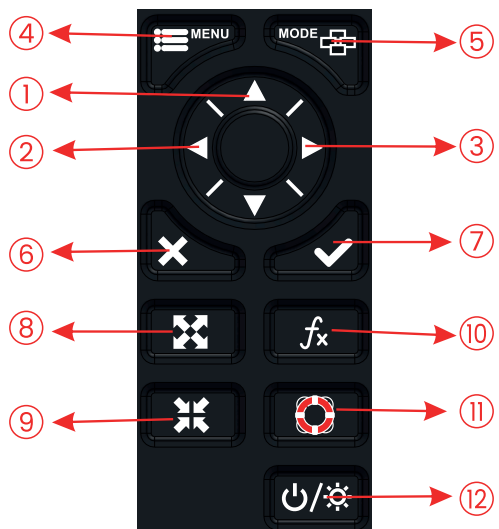




## Quick Start Manual for TideON CORE 7" & CORE 9"



This manual is applied to CORE 7" & CORE 9"



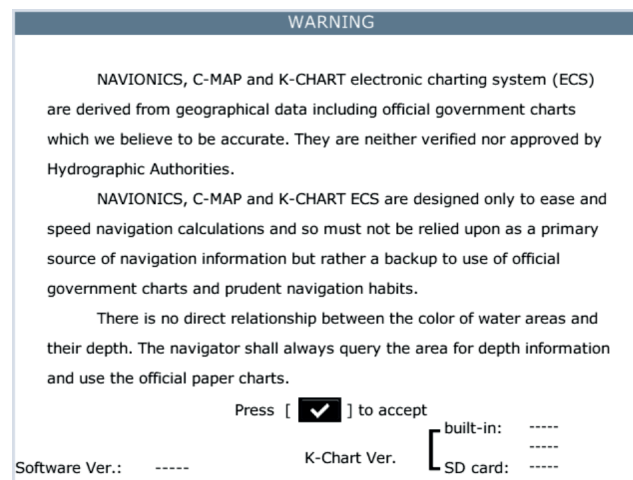
- ① Chartplotter function: Move the cursor upward or to change the setting
- ② Chartplotter function: Move cursor to the left
- ③ Chartplotter function: Move the cursor to the right
- ④ Press it once to display the menu of the current page, press it twice to enter the main menu (for Chartplotter, press it three times)  
Chartplotter Function: Long press to turn track on/off
- ⑤ Display screen display mode selection  
Chartplotter Function: Long press to change track color

- ⑥ Exit the current operation, or display screen display mode selection
- ⑦ Confirm selection or enter data  
Chartplotter function: Long Press - Activates Drawing Mark option  
Short Press - Activates waypoint attribute edit window
- ⑧ Chartplotter and AIS Function: Enlarges the scale of the maps and charts
- ⑨ Chartplotter and AIS Function: Reduces the scale of the maps and charts
- ⑩ Short press - Display other functions  
Long press - Call out AIS detail list
- ⑪ Short press - MOB function
- ⑫ Long Press - Turn the power ON/OFF  
Short Press - Adjust the screen brightness and control panel dimmer

### Turn ON and OFF Power

Turn on the power by pressing key, the unit beeps and displays the "TideON" logo.

Wait for the unit totally boot up to show the below warning page and press to enter working mode.



Turn off the power by pressing and holding until the screen goes off.

## Brightness Adjustment and Day/Night Display Mode Settings

### 1. Brightness adjustment



- ① Short press the key. The adjusting window appears.
- ② Press or to adjust LCD display brightness.
- ③ Press or to adjust keypad backlight.
- ④ Press the key to confirm and exit.

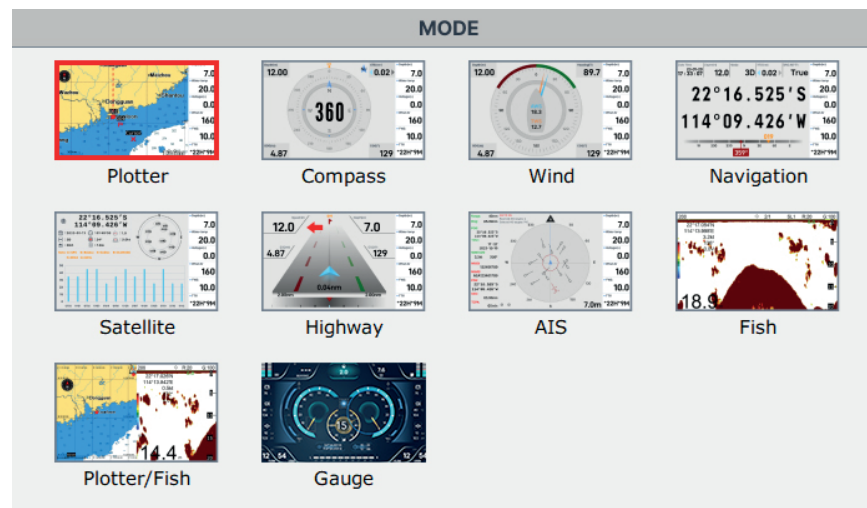
### 2. Day / night display mode settings

After opening the brightness adjustment window, press the key to switch between day/night modes.



## How to Select Display Mode

Press or key in any display mode an Icon selection window will appear as below.



You can use arrow keys to choose a display mode and press to enter that display mode. You can also press key to quit without change display mode.

**Note1:** If some display modes cannot be selected (the Icon turns to grey color) please check SETUP menu whether this display mode is turned off.

**Note2:** Since Fishfinder function is not available so you are not allowed to choose Fish and Chartplotter/Fish mode.

For more details please download the full manual:

<http://www.palby.dk>  
<http://www.nautec.se>  
<http://www.flak.no>

Palby Marine A/S, Korsvej 3, 6000 Kolding, Denmark, CVR nr. 13619883 - palby@palby.dk  
 Flak AS - Skibåsen 37, 4636 Kristiansand, Norway, Org no: 913308492 - flak@flak.no